

Eliza B.

# Kirkbride School

School Year 2021-2022

Virtual Open House

*WELCOME PARENTS, FAMILIES & STUDENTS*





## **WELCOME BACK! SCHOOL STARTS**

**TUESDAY, AUGUST 31st,  
at 8:50am!**

We are excited to Ring the Bell on a full return to in-person learning starting on August 31st, the first day of school, with all PreK-12 students attending five days per week and receiving instruction from teachers in their enrolled school.

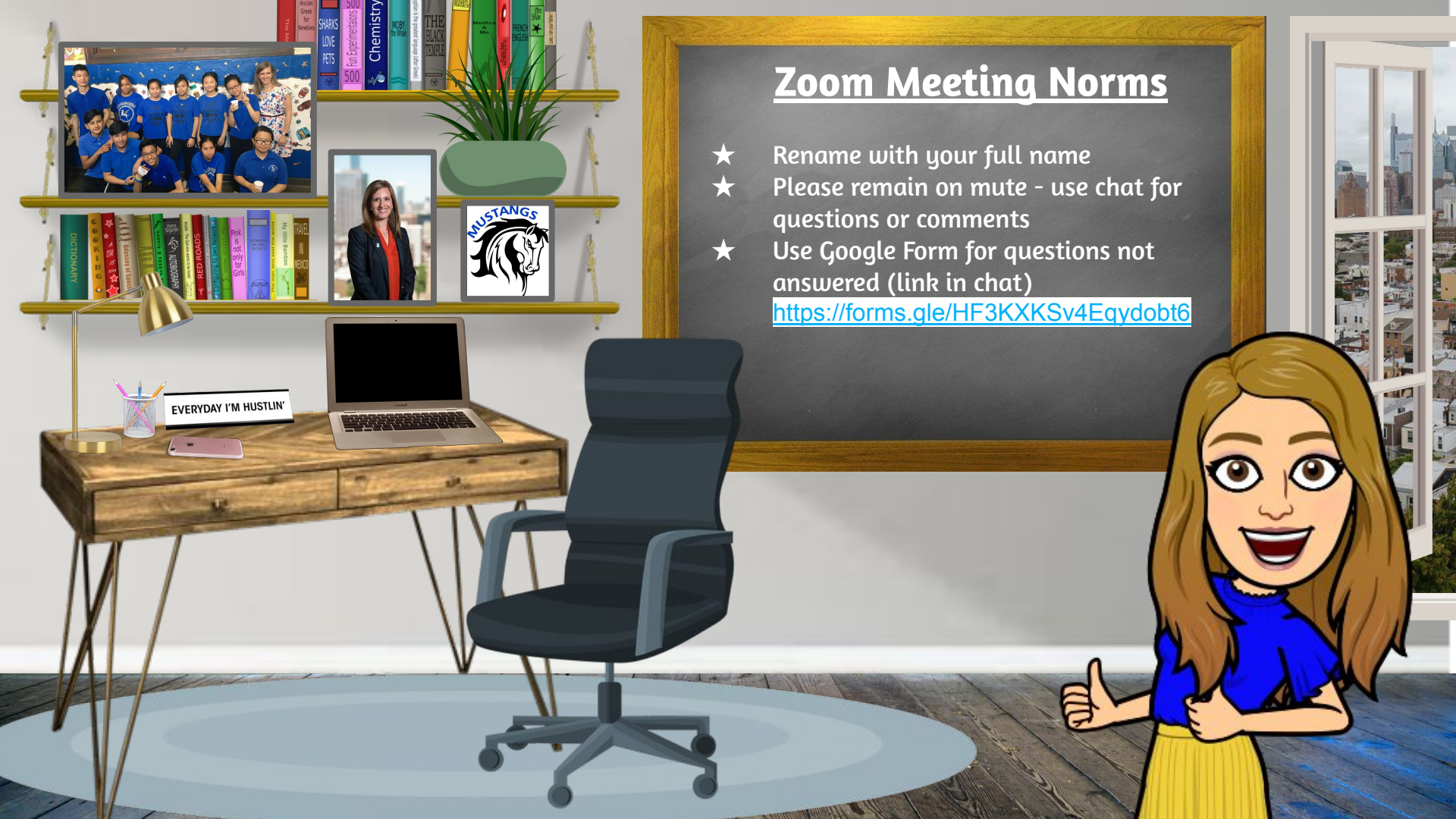
*Information, updates and resources will continue to be added to the School Districts Website as we approach the first day of school. Please visit this page often to see what's new!*

**<https://www.philasd.org/ringthebell/>**

# Zoom Meeting Norms

- ★ Rename with your full name
- ★ Please remain on mute - use chat for questions or comments
- ★ Use Google Form for questions not answered (link in chat)

<https://forms.gle/HF3KXKSv4Eqydobt6>



# Who We Are

## 2021 Facts

503

STUDENTS

Kindergarten - Grade 8 + PK

70

STAFF MEMBERS

37 Teachers, 11 Assistants, 5 BCAs, 1 Counselor, 1 Secretary, 1 Nurse

45%

ESL Students

17%

SPECIAL EDUCATION STUDENTS

1 Kirkbride Family!





# Kirkbride School

## VISION

*The vision of the Eliza B. Kirkbride Elementary School is that every child will learn to his/her full potential.*

*Our teachers readily accept the challenge to ensure that all students receive a quality education that will allow them to achieve proficiency in school, while preparing them for a successful future. When students graduate from Kirkbride, they will be prepared for high school and beyond.*

## MISSION

*100% of students will gain admission to the high school of their choice*



KIRKBRIDE



*THE SCHOOL DISTRICT OF PHILADELPHIA*  
**ELIZA B. KIRKBRIDE SCHOOL**

---

2021-2022

### 2020-2021 Priorities

- **COLLABORATION:** build partnerships within our building and school community to provide access to high quality education in order to build strong academic and moral character.
- **EQUITY:** create opportunities and break down barriers for all students to reach their goals and dreams, regardless of their race, ethnicity, status, culture, or identity.
- **INSTRUCTION:** lead a culture of teaching and learning, driven by student achievement, and give our students and community members tools that empower.
- **WELLNESS:** cultivate an environment that integrates social and emotional experiences and opportunities to promote care and mindfulness for all community members.

# Points of Pride



## Model School Climate

Rated 94% on School Progress Report for school culture, attendance and student and parent engagement (SY18-19)

## Lindback Award Winners

4 Teachers, 1 Principal Award  
*Congratulations, Ms. Memmolo 2021 Winner*

## Diverse School Community

We value diversity in our community with many different races, ethnicities, cultures, beliefs and experiences

# Family Involvement

## Home & School Association

Our Kirkbride HSA was named ***HSA OF THE YEAR(!)*** by the Philly Home & School Council for their support of our community. They are focused on serving STUDENTS, PARENTS and FAMILIES!

If you want to get involved, email: [kirkbridehsa@gmail.com](mailto:kirkbridehsa@gmail.com).

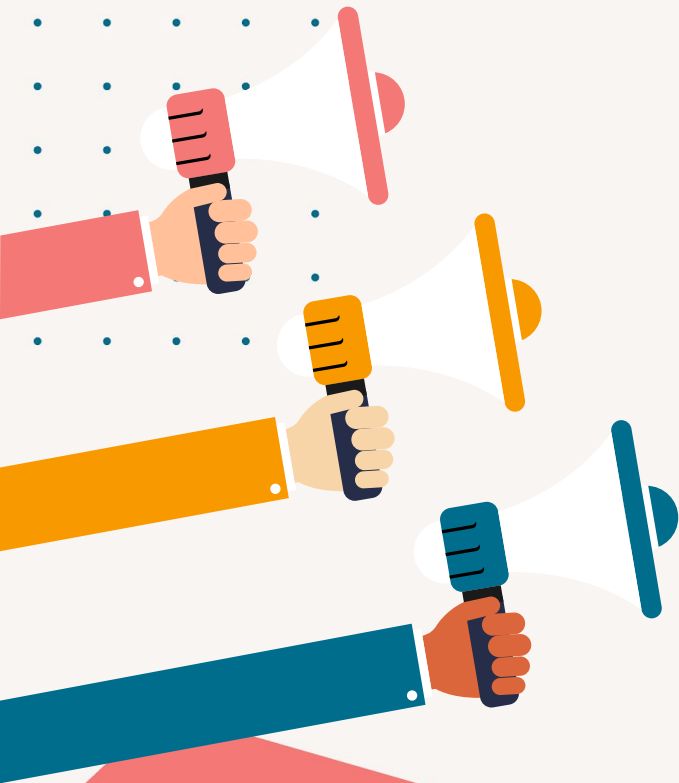
Web site: <https://sites.google.com/view/kirkbride-hsa/home>

Follow the KB HSA on Instagram: [@kirkbride\\_hsa](https://www.instagram.com/kirkbride_hsa).

Please also follow our school social media accounts

Twitter: [@EBKirkbridePHL](https://twitter.com/EBKirkbridePHL)

Instagram: [@KirkbrideSchool](https://www.instagram.com/KirkbrideSchool)





MEET OUR TEAM

An illustration of a diverse team of six people (three women and three men) standing behind a large white banner. The banner has the text "MEET OUR TEAM" written in bold, red, sans-serif capital letters. The team members are wearing various colorful clothing: a woman in a blue shirt and dark overalls, a man in a yellow shirt, a woman in a pink shirt and glasses, a man in a red shirt, a man in a blue jacket and glasses, and a man in a dark blue shirt. They are all smiling and have their arms raised in a celebratory gesture. The background is a light beige color with a large red geometric shape on the left and a grid of small yellow dots on the right. The overall style is modern and flat.



## Rebecca Julien, Principal



Principal Julien has served as the principal of Eliza B. Kirkbride School for 6 years. Located in South Philadelphia, Kirkbride serves more than 500 students. Kirkbride was named a Peer Leader for the 3 years in a row for the SDP School Progress Reports (SPR). In Ms. Julien's first year as principal, the school increased the 'Progress' score by 35%. Kirkbride was recognized as a National Title One School in 2016. Principal Julien was recognized as a **Lindback Distinguished Principal** in 2019.

Under Ms. Julien's leadership, Kirkbride has been consistently recognized for its "model" climate on the SPR, with excellent attendance, significantly outpacing District averages. Principal Julien was selected as a Neubauer Fellow in Educational Leadership in 2018.

Ms. Julien has been an educator for 17 years, serving as a high school Spanish teacher and instructional coach for Teach for America prior to her work as principal. Ms. Julien lives in the Kirkbride catchment, and is committed to serving the community she calls home at the school her own child attends!

# Key Staff

- ★ Secretary: **Melanie Ricco**
- ★ Nurse: **Wanda Myers**
- ★ School Safety Officer: **Officer Lincoln**
- ★ Climate Staff:
  - **Coach Hull, Coach Mou, Ms. Sharon**
- ★ LEADERSHIP TEAM:
  - **Ms. Potter** - Literacy Lead Teacher
  - **Mr. Thach** - Math Lead Teacher
  - **Ms. Frederick** - SPCM
  - **Ms. Shoats** - ESL Lead
  - **Ms. Jamison** - Counselor
  - **Ms. Hunter** - Instructional Program Coordinator



# Welcome to Kirkbride! New Team Members

## INSTRUCTIONAL STAFF

### 2021

- Tal Lessa - ESL, grade 3
- Nakia Shoats - ESL, grade 6-8; ESL Lead
- Jessica Toscani - Learning Support, K-4
- Theo Delafosse-Brown - grade 6, ELA

### 2022

- Nertila Ferko - grade 1
- Emily Stollman - grade 3
- Brian Sciubba - MY math
- Charlie Porter - MY Science

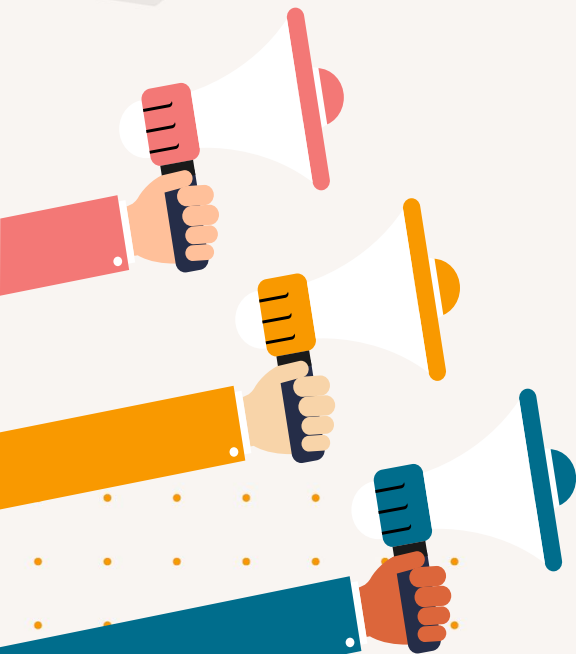
## OTHER STAFF

- Amy Hunter
  - Teacher - Instructional Program Coordinator
- Carolyn LeComte
  - Early Literacy Specialist
- Josh McIntyre
  - Building Sub

### UPENN GSE UTAP Residents:

- Ivy Choi
  - Mentor: Ms. Oteri (K)
- Sierra Vogel
  - Mentor: Ms. Heidel (Gr. 2)

*Other student teachers will be introduced as they are placed by our University Partners!*



KIRKBRIDE



ELIZA B. KIRKBRIDE  
SCHOOL



## POSITIONS

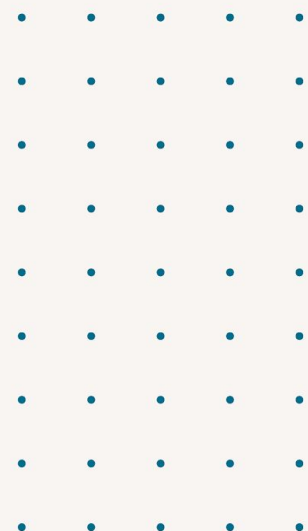
- PRE-K CLASS ASSISTANT  
(ASSOC. DEGREE NEEDED)
- STUDENT CLIMATE STAFF  
(5 HR. WITH BENEFITS)
- \*LONGTERM SUBSTITUTE  
(\*CONTRACTED WITH  
KELLY SUBSTITUTE  
SERVICES)

## Contact Us

Principal Rebecca  
Julien

Email Resume to:  
[rjulien@philasd.org](mailto:rjulien@philasd.org)

Check us out:  
<https://tinyurl.com/KBProfile>



Please spread the word!  
Interested and qualified  
candidates should email  
Principal Julien

[rjulien@philasd.org](mailto:rjulien@philasd.org)

# Bilingual Counseling Assistants (BCAs)



**Ms. Afanador "Ms. Maria"**

Spanish BCA

***mafanador@philasd.org***

267-582-5606



**Ms. Chan "Ms. Marie"**

Chinese (Cantonese) BCA

***mkchan@philasd.org***

267-603-1762



**Ms. Wang "Ms. Connie"**

Chines (Mandarin) BCA

***xwang@philasd.org***

267-225-3832



**Ms. Ma**

Khmer BCA

***polykama@philasd.org***

215-301-8341



NEW SY21-22: **Amanda Tieu** - Vietnamese  
(***atieu@philasd.org***)



# Meet our Specialists



# Specialists Rotation

Design!

Play!

Explore!

Create!

Imagine!

Students work with 1 specialist teacher for 2 weeks at a time, then they switch

## Teachers & Subjects

Mr. Brothers

Computer Lab

Mr. Drames

Health & Physical  
Education

Mr. Gobreski

Science Lab  
Enrichment

Mr. Metcalfe

Visual Arts

Mr. Furmanchin

Writing Enrichment



*Digital Literacy and  
Computer Lab with  
Mr. Brothers  
[lrbrothers@philasd.org](mailto:lrbrothers@philasd.org)*



**Students will  
learn how to  
research & use  
Google Apps.**



# Welcome Parents!

Who I am: Mr. Drames

What I teach: Phys Ed grades  
K-8 / Health 6-8

Contact email:  
[adrames@philasd.org](mailto:adrames@philasd.org)

My class objectives:

Get the kids moving & teach  
them the importance of a  
healthy & active lifestyle



THE SCHOOL DISTRICT OF  
PHILADELPHIA



Mr. Gobreski  
Science Enrichment  
[tjgobreski@philasd.org](mailto:tjgobreski@philasd.org)

Science for all  
grades with an  
environmental  
focus







**Peter  
Metcalfe**

My philosophy of teaching Art engages the imagination using all of our senses and helping students build Vocabulary skills.

My 'Literacy through the Arts' program helps to connect a wide variety of music with important works of art.

[pmetcalfe@philasd.org](mailto:pmetcalfe@philasd.org)



# MR. FURMANCHIN

## WRITING ENRICHMENT

[DFURMANCHIN@PHILASD.ORG](mailto:DFURMANCHIN@PHILASD.ORG)



# Attendance Counts!

- Daily attendance in school is critical for student success!
- Attendance will be taken each morning at 9:00am. Please be on time!
- Our goal for all students is 95%....no more than 8 absences in a year.
- Submit absence notes to teachers via written note, email or Class Dojo. Notes must be received for absence to be excused
- A doctor's note is needed for 3 or more consecutive absences.

# Be ready for class....EVERY DAY!

Eat breakfast each morning to be ready to learn.

*\*breakfast also provided at school*

Check supplies list on our Kirkbride Web site:

<https://kirkbride.philasd.org/>

Dress in your Kirkbride BLUE! See our uniform policy here:

[https://kirkbride.philasd.org/internet\\_policies/uniform-policy/](https://kirkbride.philasd.org/internet_policies/uniform-policy/)

Grade 3-8, remember to bring your charged Chromebook each day!

Complete your homework and reading daily!

# 1:1 Student Chromebooks

- ★ Every student, K-8, will have a District-issued Chromebook, (property of SDP) assigned to them to be used for instructional purposes.
- ★ Returning students in grade 1-8 should bring their (fully charged!) Chromebook and charger on the first day for inventory verification. ***Please check to make sure that your Chromebook is in good working order, before Aug. 31! If not, you MUST take it to a repair center. Info on next slide and SDP's Web site here:***  
<https://www.philasd.org/coronavirus/chromebooks/>

- ★ Kindergarten and new students will receive a Chromebook at Kirkbride the first week.

## Use of Chromebooks & chargers

- Students in K-2 will keep their Chromebooks in classrooms; they will not transport them
- Students in Grades 3-8 may transport their Chromebooks, to and from home and school (as assigned by their teacher for assignments)





# Student Chromebook Distribution and Repairs

For more information call (215-400-4444) or email ([FamilyTechSupport@philasd.org](mailto:FamilyTechSupport@philasd.org))

Now Until August 12th	Monday	Tuesday	Wednesday	Thursday	Friday
<b>440 N. Broad St</b> 1st Floor Lobby Distribution and Repairs	9:00 AM- 12:00 PM	Not available	9:00 AM- 12:00 PM	Not available	Not available
<b>Fitzpatrick Annex</b> (Rear of Fitzpatrick Elementary) Distribution and Repairs	9:00 AM- 12:00 PM	Not available	9:00 AM- 12:00 PM	Not available	Not available
Starting August 17th	Monday	Tuesday	Wednesday	Thursday	Friday
<b>440 N. Broad St</b> 1st Floor Lobby Distribution and Repairs	9:00 AM- 2:00 PM	9:00 AM- 2:00 PM	9:00 AM- 2:00 PM	9:00 AM- 2:00 PM	9:00 AM- 2:00 PM
<b>Fitzpatrick Annex</b> (Rear of Fitzpatrick Elementary) Distribution and Repairs	9:00 AM- 2:00 PM	9:00 AM- 2:00 PM	9:00 AM- 2:00 PM	9:00 AM- 2:00 PM	9:00 AM- 2:00 PM
<b>Martin Luther King High School</b> Distribution site only, no repairs	9:00 AM- 2:00 PM	9:00 AM- 2:00 PM	9:00 AM- 2:00 PM	9:00 AM- 2:00 PM	9:00 AM- 2:00 PM

Guardians must have: Guardian ID and Student ID number

# School Day

School starts at 8:50 AM; morning meeting begins at 9:00 AM

Morning Meeting every day to build community in homeroom

Small Group Instruction daily in literacy and math to support individualized learning goals

- • •
- • One specials class a day (art, computer, phys.ed., writing or science lab)

- • •
- • Lunch & recess for all students, 45 minutes each day

- • •
- • Students have each subject daily: literacy, math, science, social studies (health occurs 45 minutes each week)
- • •

# Kindergarten Half Days & Interviews!

The first day for all students, including Kindergarten is Tuesday, August 31.

The first (5) days of school will be half day for Kindergarten students ONLY! Interviews with parents/guardians will be scheduled by the teachers in the afternoon.

- Tuesday, Aug. 31
- Wednesday, Sept. 1
- Thursday, Sept. 2
- Friday, Sept. 3
- Wednesday, Sept. 8
- *No school for all students on Monday, Sept. 6 (Labor Day) and Tuesday, Sept. 7 (Rosh Hashanah)*

**Kindergarten students should arrive on time, at 8:50am and will be dismissed at 12:30pm!**  
**Parents/guardians can arrive for dismissal at 12:20pm.**

**Note: K students in the AS program, room 106 with Ms. Frederick, will stay for the full day!**

# Marking Guidelines - GRADES!

Students should read every day!

Make sure to complete homework/asynchronous assignments

For each unit for literacy and math, students will complete a pre and post-assessment so teachers can measure their skills, and plan instruction accordingly

Classwork, participation, and assessments will account for most of the grade.

□ Kindergarten: O= 90-100; S=75-89; N=50-74 (Needs Improvement)

□ Grades 1-8: A=90-100%; B=80-89%; C=70-79%; D=60-69%; F=50-59%

# Student Supports

## □ Multi-tier System of Supports (MTSS)

- Parent or staff referral
- Plans for Behavior, Academics and/or Attendance
- Families and staff meet to help students/families progress
- Follow-up meetings and referrals/connections to outside agencies, if needed

## □ Special Education

- IEPs created to support individualized goals, as team with teachers, staff, families
- Meetings will be scheduled to review plans according to mandated deadlines
- Initial referrals follow the MTSS process

# Parent/Guardian Norms

Please make sure your child(ren) arrives to school each day on time, ready to learn!

Register for the Parent Portal to receive updates, and check your child's grades and academic progress

Ensure you practice safety measures at home and in the community to keep our children and staff safe!

*\*Consider vaccines for students 12 years and older*

Communicate regularly with the teacher via Class Dojo or Email

Read with your child or encourage reading! *Reading can be done in any language!*

Join the HSA and follow updates to support our school community

Stay up to date with District announcements



# Student Norms

- Be on time to school, every day. Attendance counts!
- Wear your uniform each day, including a properly fitting mask.

Follow health and safety guidelines; practice good hygiene.

- Be a respectful, positive and productive Kirkbride student.

- Complete assignments and HW daily; ask for help when you need it!

- Support your classmates!

Love Learning! Be Curious! Ask Questions! Don't Give Up!

# Community Support



## Bilingual Counseling Assistants

- Ms. Afanador: Monday, Tuesday, Thursday, Friday
- Ms. Wang: Thursdays
- Ms. Ma: Fridays
- Ms. Chan: TBD
- Ms. Tieu: TBD

## Meal Pickup

Weekly, coordinated by HSA; follow in IG for updates, including day and time

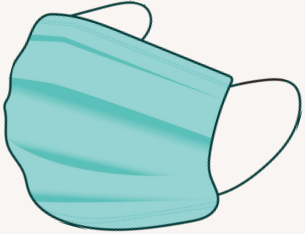
## Counseling Support

Contact Ms. Jamison ([abrown6@philasd.org](mailto:abrown6@philasd.org))

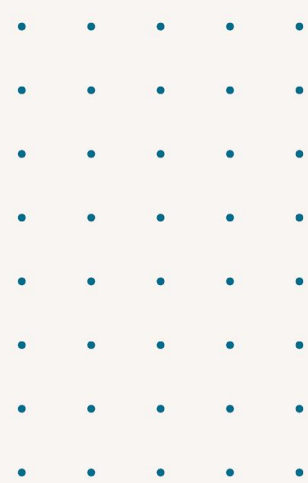
## Health/Nurse

Contact Nurse Myers ([wmyers@philasd.org](mailto:wmyers@philasd.org))

# Health & Safety Measures



- Masks required
- Social Distancing where possible
- Priority is the return of all students, PK-8 to in-person learning
- FREE vaccines available to students 12 years and older
- Health and Safety Protocols followed
- Air purifiers in all classrooms, offices and instructional spaces



All students, teachers and staff **MUST** wear a mask at all times



# Sanitation Stations



Every classroom will have a Sanitation Station where students can sanitize their hands at anytime. Masks will be available for any student that doesn't have one or needs a replacement.

Hand sanitizer is available at all points of entry/exit and restrooms.





# Social Distancing

We have designated one 'UP' staircase and one 'DOWN' staircase to reduce contact while students and staff travel in the building.

Decals to assist students in keeping a safe distance line the hallways.

Safety Practices signs are posted in all student and staff areas



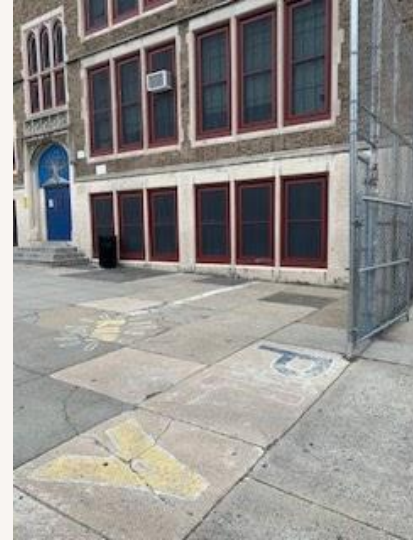
# Morning Arrival / Afternoon Dismissal

All students will line up in the school yard for entry into the school building in designated classroom lines.

Students arrive between 8:30am - 8:50am

Afternoon Dismissal - pick up students by their class sign!

Dismissal begins at 3:20pm.



Our building engineer and custodial staff will clean and sanitize all surfaces before, during, and after each school day.



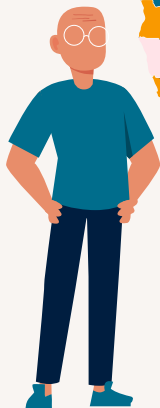
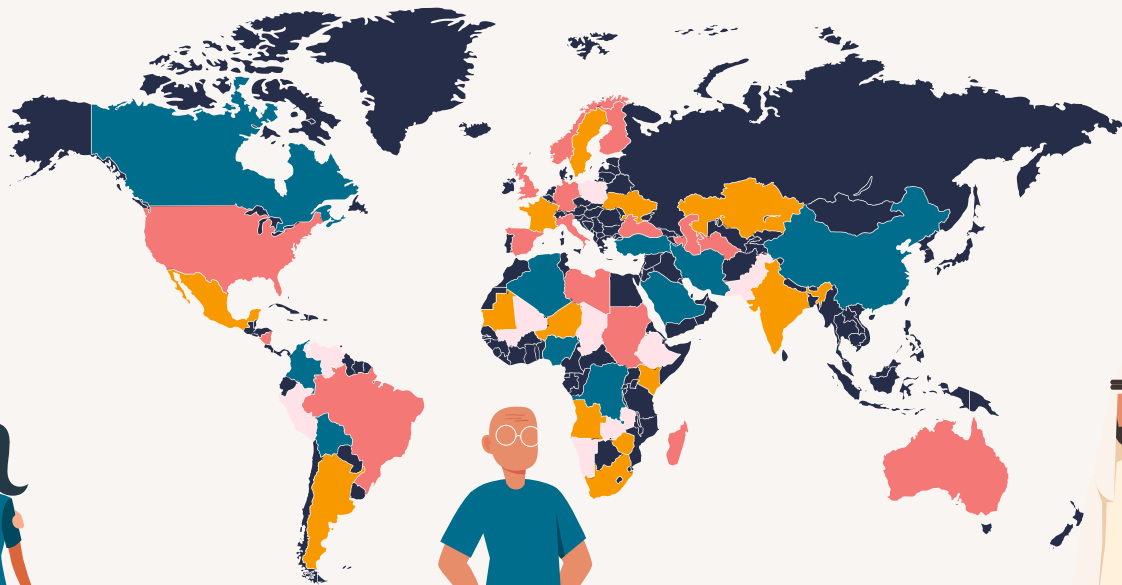
# Sunrise Afterschool Program

Programming will resume this year! Please check out their Website for complete info:

<https://www.sunriseofphila.org/>



Thank you for all of your support!



The background features a light gray base with several decorative elements: a red polygon in the top-left corner, a gray polygon in the top-right corner, a pink polygon in the bottom-right corner, and a series of teal diagonal lines in the bottom-left corner. On the right side, there is a grid of small orange dots.

# Questions & Answers!



The background of the slide is a light beige color. On the left side, there is a large red polygon and three parallel teal lines below it. On the right side, there is a grid of small orange dots. At the bottom, there are some pink and light grey geometric shapes.

# Thanks!

CREDITS: This presentation template was created by Slidesgo, including icons by Flaticon, and infographics & images by Freepik.

Please keep this slide for attribution.